



REGIONAL APPLICATIONS

# THE MICHELIN® XDS® 2 CUSTOM MOLD RETREAD



## MICHELIN RETREAD TECHNOLOGIES

The MICHELIN® XDS®2 Custom Mold Retread delivers year-round drive axle traction, optimized for severe winter conditions.

Line Haul	Regional	Urban	On/Off Road
-----------	----------	-------	-------------

■ Recommended    □ Acceptable



### BENEFITS:

#### Driver Confidence

Seamless, Splice-less, New Tire Appearance



Custom Mold™  
XDS® 2

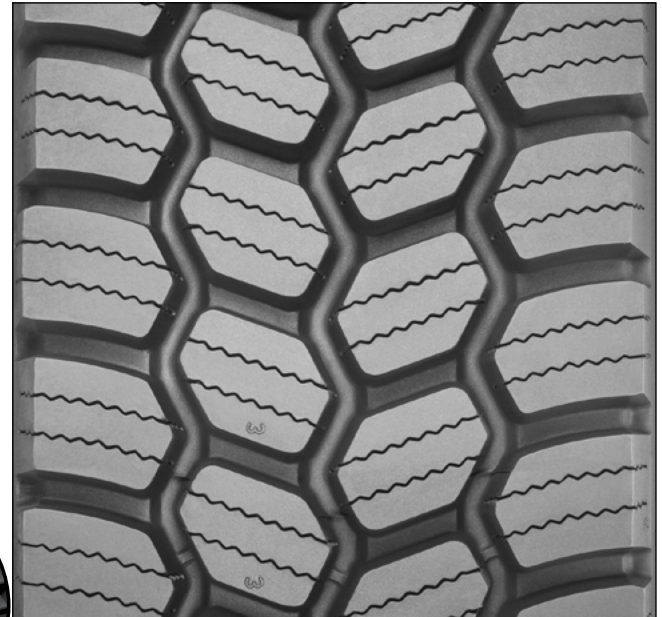
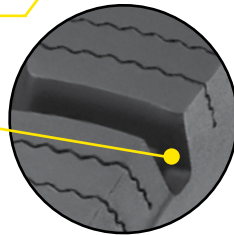
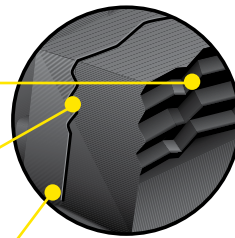


New Tire  
XDS® 2

#### Outstanding Year-Round Traction

##### Optimized Traction for Snow

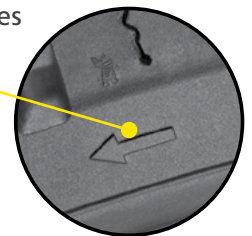
- **Matrix™ Sipes** provide inter-locking action which offers excellent traction and even wear.
- **Zig-Zag Groove Walls** provide optimized biting edges and excellent water and snow evacuation.
- **Full Depth Sipes** provide excellent traction throughout the life of the tread.
- **V-Shaped Transverse Shoulder Grooves** promotes stone, mud, and snow evacuation.



#### Long Tread life

##### Extended Miles Even in High Scrub Applications

- **Engineered Tread Compound** provides proprietary technology specifically formulated for demanding high scrub applications and improved wear performance
- **Wide Contact Patch** distributes force for longer life
- **Directional Tread** reduces heel/toe wear associated with open shoulder designs



Casing Size	Tread Depth
11R22.5	20 mm
	25/32"

TO FIND OUT MORE  
[michelintruck.com](http://michelintruck.com)

FIND US ON FACEBOOK  
[michelintruck.com](http://michelintruck.com)

CONTACT US BY EMAIL  
[michelintruck.com/contact-us/](mailto:michelintruck.com/contact-us/)

CONTACT US BY TELEPHONE  
1-888-622-2306

Michelin North America Inc., One Parkway South, Greenville, SC 29615, 1-888-622-2306  
Copyright © 2018 Michelin North America, Inc. The Michelin Man is a registered trademark owned by Michelin North America, Inc. All rights reserved.  
An Equal Opportunity Employer PDF only (07/18)

[www.michelintruck.com](http://www.michelintruck.com)



# MICHELIN